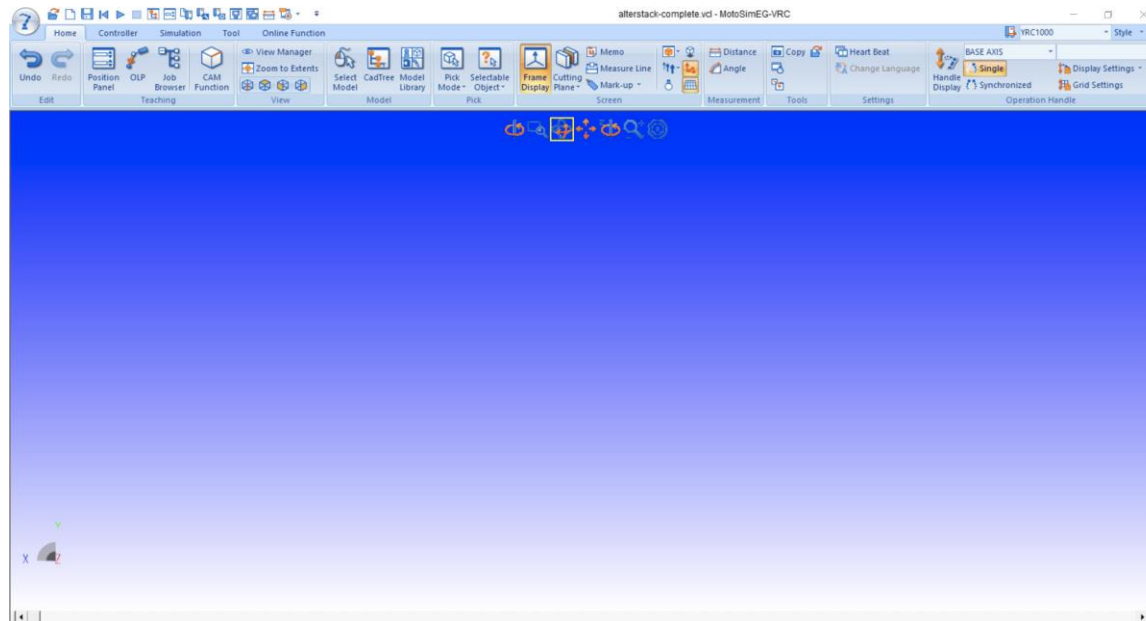


This document captures ideas, experiences, and informal recommendations from the Yaskawa Partner Support team. It is meant to augment – not supersede manuals or documentation from motoman.com. Please contact the Partner Support team at [partnersupport@motoman.com](mailto:partnersupport@motoman.com) for updates or clarification.

## MotoSim Blank Screen after Re-Opening a Simulation



### Introduction

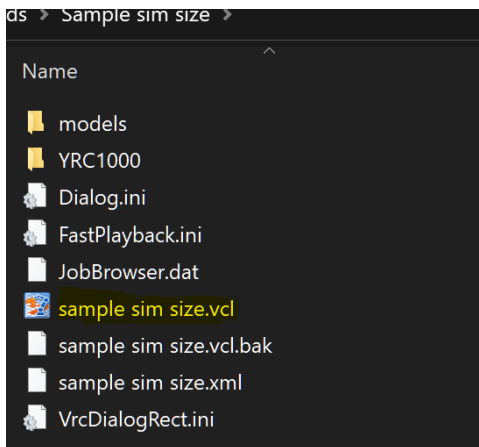
Sometimes, after saving a simulation and re-opening it, there may be a blank screen, as seen above. Understandably this may cause the user to panic. But, please, do not panic. All is not lost. This issue may simply be a corruption of view coordinate data in the .vcl file.

To resolve this, the .vcl file will need to be opened and accessed directly in a text editor.

## How to Fix the Issue

This process should only take about a minute to resolve.

1. Find the .vcl file in the simulation folder (highlighted in yellow below.)



2. Open the simulation's .vcl file in a text editor and look for the section call **NSIMVIEW**.

```
167 NSIMVIEW
168 {
169 CAMERAPOSITION=0.000000,0.000000,0.000000;
170 CAMERATARGET=0.000000,-nan,-nan;
171 CAMERAUPVECTOR=0.000000,0.000000,0.000000;
172 CAMERAFIELD=0.000000,60787221896101888.000000;
```

3. Replace the **-nan** text (highlighted above) with **0.000000** and save the changed file.
4. Re-open the sim and all the models should be visible.